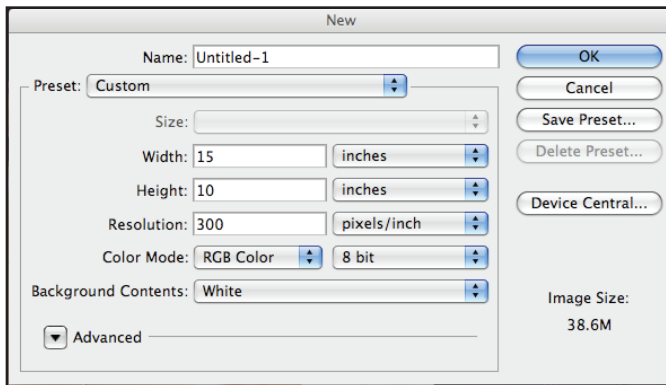
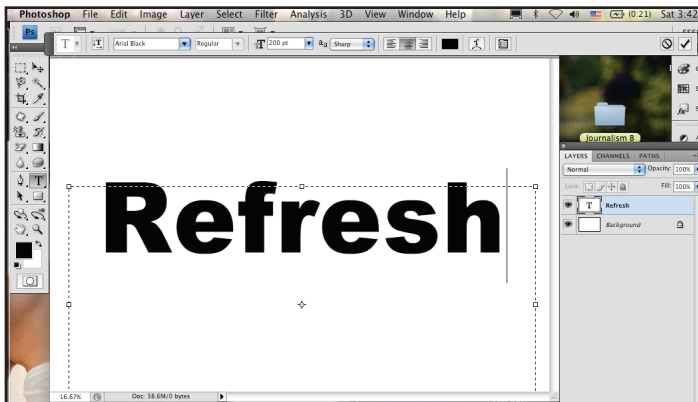


Putting images into text

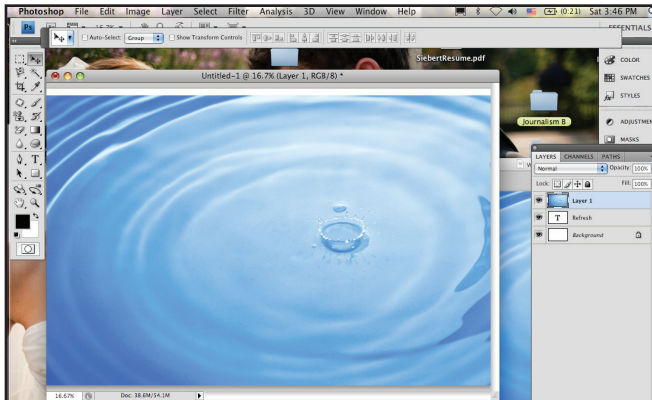
Step 1



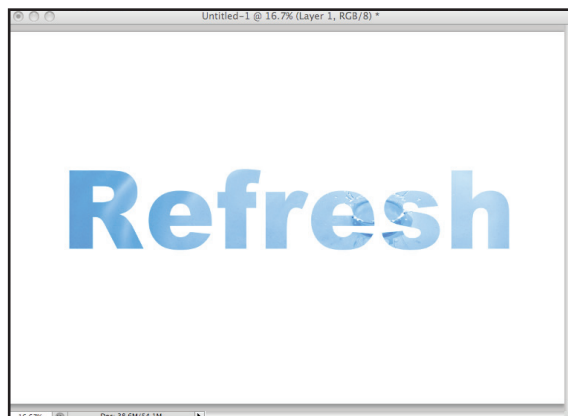
Step 2



Step 4



Step 6



Instructions (Not all steps are screen shot for you)

Step 1 Open up a new document 15" by 10" (inches not pixels)

Step 2 Type "Refresh" or "Candy" in Ariel Black size 200 (then hit the check mark)

Step 3 Open up the water or the candy file and have it side by side with the "refresh" file

Step 4 Move the water or candy image over the text. Make sure the picture covers all of the text

Step 5 In the layers pallet "hover" in-between the top two layers hold option and when you see the mini vendiagram click

Step 6 Move picture within text as desired with move tool

Note: This can also be done for individual letters---each letter is it's own layer with the picture above the layer.